



Linea



ESSENTIAL

# ISOLMANT N CLASSIC

## UNDERFLOOR INSULATION

The ultra-thin (only 1 mm) and high-density solution for the floating installation of parquet and laminate flooring

### WHAT IS ISOLMANT N CLASSIC

High-density resilient polyethylene layer with embossed Isolmant top surface. Improves footfall sound insulation and reverberation noise (RWS) performance when used for the floating installation of parquet and laminate flooring. To be installed with the embossed side facing upwards.

### AREAS OF APPLICATION

Isolmant N Classic is designed specifically for the floating installation of laminate and parquet flooring; a high-quality system that reduces both impact and reflected noise. Isolmant N Classic has been developed to protect the click-lock joints of these floorings, even under heavy loads, thanks to its high compressive strength (CS). Isolmant N Classic is suitable for use with underfloor heating and cooling systems.

### COMPATIBLE FLOORING\*

LAMINATE - (6 to 8 mm thick)	✓
LAMINATE - (Sp. 8 mm th.)	✓
LVT, SPC	✗
PREFINISHED PARQUET - 2 layers	✗
PREFINISHED PARQUET - 3 layers	✓
T&G SOLID WOOD FLOORING (thickness < 16 mm – plank width < 16 cm)	✗
CERAMICS	✗

\* General indications valid for traditional installation supports only



[www.blauer-engel.de/uz156](http://www.blauer-engel.de/uz156)



SUSTAINABLE



HEALTHY



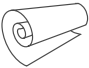

All our products bearing the “Guaranteed Green Planet” label are certified and comply with the sustainability criteria of the major environmental protocols. They are also certified according to the highest Italian and international standards.

# ISOLMANT N CLASSIC > TECHNICAL SPECIFICATIONS | 1

		VALUE	ADDITIONAL INFORMATION	STANDARD
Acoustic		NOMINAL THICKNESS:	1 mm	EN 823
		REFLECTED WALKING SOUND (RWS):	23 Sone	Superior performance EN 16205
		IMPACT SOUND INSULATION (IS):	$\Delta L_w = 19$ dB	EPLF MMFA: superior performance ISO 10140-3
Mechanic		COMPRESSIVE STRENGTH (CS):	110 kPa (0.5 mm deformation)	CS2 class EPLF: superior performance EN 826
		COMPRESSIVE CREEP (CC)	< 50 kPa (max. load def. < 0.5 mm in 10 years)	CS2 class EPLF: superior performance EN 1606
		DYNAMIC LOAD (DL):	> 100.000 cycles (at 25 kPa)	DL2 class EPLF: superior performance EN 13793
		IMPACT RESISTANCE - LARGE BALL TEST (RLB):	> 800 mm (under 7 mm of DPL laminate flooring)	RLB2 class EN 13329
		CONFORMABILITY (PC):	0.8 mm	PC1 EN ISO 868
Thermo hygrometric		THERMAL RESISTANCE (RT):	$R_t = 0.024$ m <sup>2</sup> K/W	$R_{\lambda,B} \leq 0.10$ m <sup>2</sup> K/W cooling $R_{\lambda,B} \leq 0.15$ m <sup>2</sup> K/W heating EN 12664
		WATER VAPOUR RESISTANCE (SD):	$S_d < 75$ m	method A @23°C from 0% to 50% relative humidity EN 12086
		REACTION TO FIRE CLASS:	$E_{fl}$	EN 13501-1
		EMISSION OF VOLATILE ORGANIC COMPOUNDS:	VOC A+ <sup>(1)</sup>	ISO 16000-9

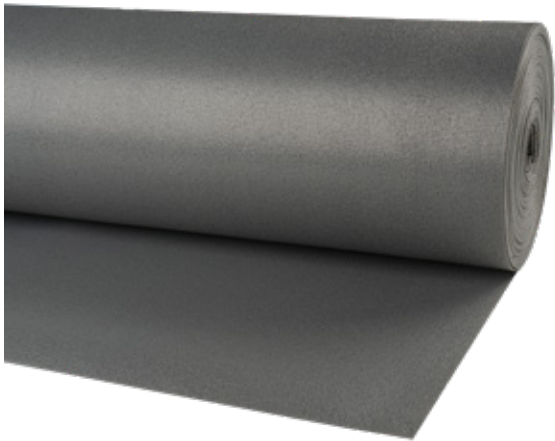
(1) MFPA laboratory Test Report No. n. P 4.2/08-208-7

(2) Istituto Giordano test report no. 376851

	<b>CE MARKING:</b>	Harmonised standards for CE marking are NOT currently available for acoustic insulation products. This means that Isolmant products are currently NOT subject to CE marking, nor to the drawing up of a PDO (declaration of performance) or DDP (declaration of performance). All Isolmant products are placed on the market in compliance with the regulations in force in the country of destination and with the necessary certifications to guarantee their use in dedicated applications.
	<b>SIZE:</b>	Rolls of: 1.0 m x 20 m equal to 20 m <sup>2</sup>
	<b>PACKAGE:</b>	Cardboard boxes of 35 rolls (700 m <sup>2</sup> )

**ITEM SPECIFICATIONS**

High-density Isolmant polyethylene resilient layer (type Isolmant N Classic). Density 100 kg/m<sup>3</sup>. Nominal thickness 1 mm.



## GREEN FEATURES OF ISOLMANT N CLASSIC

- Volatile Organic Compounds free (VOC A+)
- Blue Angel certified product (European eco-label certification).
- **It contains no plasticisers, asbestos, formaldehyde, halogens or heavy metals.**
- It is solvent-free and contains no other ozone-depleting substances.
- This product can be disposed of according to EWC n. 170604.

This product complies with the requirements defined by CAM Edilizia for acoustic and thermal insulation materials regarding the percentage of recycled material and the absence of hazardous substances.

**Green Planet is our sustainable development protocol that includes all our commitments to increase process, environmental, social and corporate responsibility. A set of sustainable actions, goals and behaviors in agreement with our mission, our ethical choices and the Sustainable Development Goals from 2030 Agenda.**

**PRODUCT AND PRODUCTION PROCESS SUSTAINABILITY**

**ENVIRONMENTAL SUSTAINABILITY**

**CORPORATE RESPONSIBILITY**

**SOCIAL RESPONSIBILITY**

**Find out more at [Isolmant.com](https://www.isolmant.com)**

ADVANTAGES



Excellent acoustic insulation against both impact noise and reverberation noise (RWS).



Minimum thickness.



Low thermal resistance.



Good compressive strength (CS).



Contact with water does not alter its performance and characteristics.



Unalterable over time with unlimited durability.



Resistant to mold or insects.

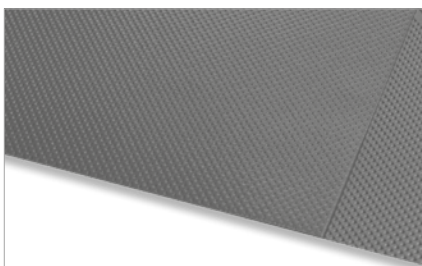
APPLICATION ADVANTAGES



Easy to install.



Clean, dust-free cutting with a utility knife or cutter.



### PREPARING THE SCREED

### STEP 1

The surface where Isolmant N Classic will be laid should be load-bearing, flat, adequately even, clean and free from debris and oil. However, it will be the responsibility of the installer to assess the suitability of the surface for laying the sheets and the subsequent floating installation of laminates and wooden floorings by carrying out some preliminary checks:

- external doors and windows must be installed with the relevant glass panes and the rooms to be floored must be protected from severe weather conditions;
- other types of flooring already in place;
- masonry, installation of cladding and sanitary fixtures must have been completed;
- the temperature of the rooms must be  $\geq 15^{\circ}\text{C}$ ;
- the ambient humidity must be between 45% and 60%;
- the conditions of the substrate must have been checked and it must be compliant and suitable for the laying of the flooring;
- in the case of a heating screed, the pre-heating cycle must have been carried out.

### LAYING THE SHEETS

### STEP 2

Lay the sheets with the screen-printed side facing upwards (visible), side by side and carefully aligned, taking care not to overlap them; cutting the sheets is easy and clean: we recommend using a utility knife or box cutter.

### LAYING OF WOODEN FLOORING

### STEP 3

In particular, the wooden flooring must be laid in suitable temperature and humidity conditions, in strict compliance with the specifications for laying wooden floors. The sector's standards and regulations establish that the installation environment must guarantee environmental conditions within the values of max. RH 45%-60%,  $T^{\circ}\text{C}$  18°C - 25°C, the necessary conditions to keep a proper wood/environment balance as provided by UNI EN 13489:18 (7%+2%). In addition, the screed on which the flooring system is laid must have a humidity percentage of no more than <2% in the case of a screed/laying surface without a heating system, <1.7% in the case of underfloor heating.



## WARNINGS:

\* This data sheet does not constitute a specification and, if it consists of several pages, please ensure that you have consulted the complete document. Although, these instructions are the result of our best expertise they are indicative. The user should establish whether the product is suitable for its intended application. The user will be also in charge of all the responsibility for the use of the product itself.

\*\*The sound insulation values given in this technical data sheet are the result of laboratory tests or tests carried out on site: they cannot be considered a predictive value for every situation that may occur on site. Acoustic performance is closely linked to the specific conditions of each site.

\*\*\* Caution: do not expose the product to direct sunlight and bad weather.



Via dell'Industria 12, Località Francolino | 20074 Carpiano (MI)  
Tel. +39 02 9885701 | Fax +39 02 98855702 | clienti@isolmant.it  
isolmant.it | sistemapavimento.it | isolmant4you.it

Isolmant is a TECNASFALTI srl's registered trademark - © TECNASFALTI - All rights reserved - Copying, even partially, is forbidden - In force since May 2025 - This document supersedes and replaces all previous versions.