



# ISOLMANT **TELOGOMMA TUBI**

## EQUIPMENT NOISE

Product specific for pipe insulation, easy to install since it is malleable and has a positioning adhesive layer.

### WHAT IS ISOLMANT TELOGOMMA TUBI?

Malleable product that is made of Isolmant Telo-gomma, suitably calibrated, and joined with a special expanded closed-cell rubber mixed with 6 mm elastic polyolefin polymers. In particular, this Isolmant Telo-gomma layer gives the product a high mass that increases its soundproofing performance, while the special expanded rubber dampens vibrations and prevents rigid contact of the pipes with the wall components. Adhesive film on one layer. Total thickness 7.5 mm.

### SPECIFIC APPLICATIONS

Isolmant Telogomma Tubi is a malleable insulation cover for pipes, drain columns and ventilation ducts. It performs well as an acoustic and thermal insulator, as well as a vibration damper. Thanks to its conformability and to the adhesive side it can easily be applied on non-planar surfaces.



### ADVANTAGES

- Heavy layer, sound-insulating and soundproofing product.
- Easy and quick to install on site thanks to the adhesive side and its conformability.
- Inalterable over time.
- Unlimited duration.

## ISOLMANT TELOGOMMA TUBI > TECHNICAL SPECIFICATIONS

THICKNESS:	7.5 mm
SOUND INSULATION:	$R_w = 29$ dB <sup>(1)</sup>
THERMAL RESISTANCE:	$R_t = 0.293$ m²K/W
CE MARKING:	Harmonised standards for CE marking are NOT currently available for acoustic insulation products. This means that Isolmant products are currently NOT subject to CE marking, nor to the drawing up of a PDO (declaration of performance) or DDP (declaration of performance). All Isolmant products are placed on the market in compliance with the regulations in force in the country of destination and with the necessary certifications to guarantee their use in dedicated applications.
SIZE:	Rolls of 1 m x 3 m (h x L) = 3 m² Available on request with pre-cut every 20 cm
PACKAGE:	Single roll

(1) S.C.S. Report no. 052\_06 - Transmission Loss test for normal incidence of Isolmant Telogomma 4 kg/m²

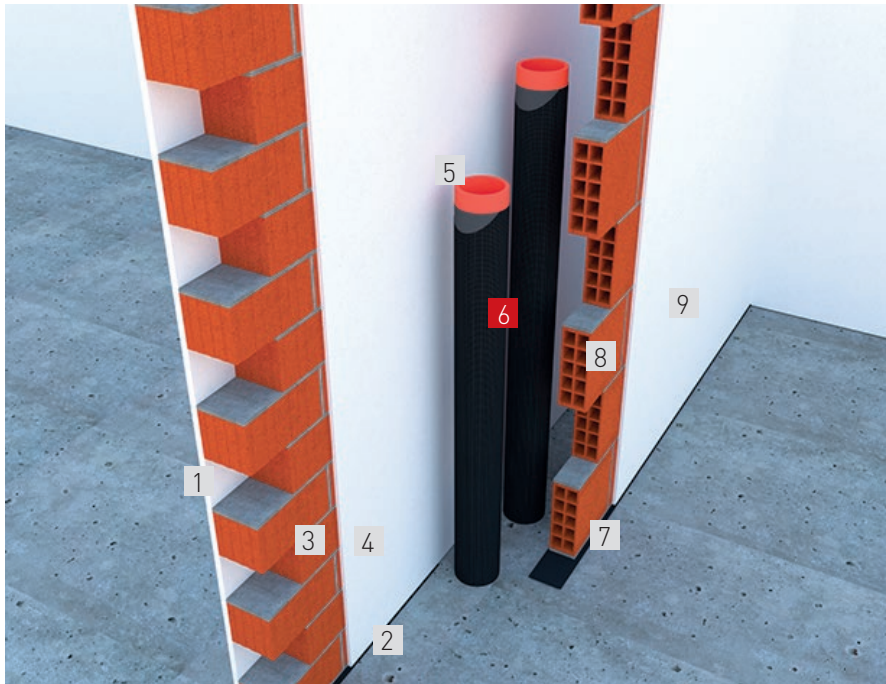
## ITEM SPECIFICATIONS

Heavy layer elasto-dynamic layer based on special compound EPDM rubber with mineral fillers, free from bitumen and halogens, with calibrated thickness coupled with expanded closed-cell rubber mixed with 6 mm elastic polyolefin polymers. Adhesive film on one layer.  
Nominal thickness 7,5 mm.

### INSTALLING ISOLMANT TELOGOMMA TUBI

### STEP

To prevent the noise generated by drainage ducts from passing through the walls, these pipes must be coated with sound-proofing and massive material. Isolmant telogomma tubi should be installed with the adhesive side towards the pipes. This product is ideal for wrapping pipes and ensuring high noise reduction, as well avoiding rigid pipe contact with wall components (for this function it is advisable to wrap the pipes even when using silenced pipes)







### WARNINGS:

\* This data sheet does not constitute a specification and, if it consists of several pages, please ensure that you have consulted the complete document. Although, these instructions are the result of our best expertise they are indicative. The user should establish whether the product is suitable for its intended application. The user will be also in charge of all the responsibility for the use of the product itself.

\*\*The sound insulation values given in this technical data sheet are the result of laboratory tests or tests carried out on site: they cannot be considered a predictive value for every situation that may occur on site. Acoustic performance is closely linked to the specific conditions of each site.

\*\*\*Caution: do not expose the product to direct sunlight and bad weather.



Via dell'Industria 12, Località Francolino 20074 Carpiano (Mi) Tel. +39 02 9885701 Fax +39 02 98855702  
clienti@isolmant.it - [www.isolmant.it](http://www.isolmant.it) - [www.sistemapavimento.it](http://www.sistemapavimento.it) - [www.isolmant4you.it](http://www.isolmant4you.it)

Isolmant is a TECNASFALTI srl's registered trademark - © TECNASFALTI - All rights reserved - Copying, even partially, is forbidden - In force since October 2022 - This document supersedes and replaces all previous versions.