



Line



**SYSTEMIC**

## ISOLMANT SPORT

### UNDERFLOOR INSULATION

A high-density acoustic underlayment specifically engineered for sports flooring applications. This professional-grade solution offers superior impact absorption and seamless integration with horizontal composite systems while ensuring easy installation.

#### WHAT IS ISOLMANT SPORT

High-density resilient layer made of Isolmant polyethylene, designed for specialized applications. Its distinctive elastic properties enable shock absorption under various types of flooring used in sports facilities, including vinyl, PVC, linoleum, carpet, parquet, and other surfaces.

#### AREAS OF APPLICATION

Isolmant Sport underlayment is designed for high-performance sports flooring installations where impact energy absorption is critical. The system accommodates various surface materials including engineered wood, parquet, laminate, and synthetic flooring, supporting both floating installations and composite system integration depending on specific application requirements and performance criteria.

#### COMPATIBLE FLOORING\*

LAMINATE - (6 to 8 mm thick)	✓
LAMINATE - (Sp. 8 mm th.)	✓
LVT, SPC	✗
PREFINISHED PARQUET - 2 layers	✗
PREFINISHED PARQUET - 3 layers	✓
T&G SOLID WOOD FLOORING (thickness < 16 mm – plank width < 16 cm)	✗
CERAMICS	✗

\* General indications valid for traditional installation supports only



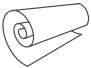

SUSTAINABLE



HEALTHY

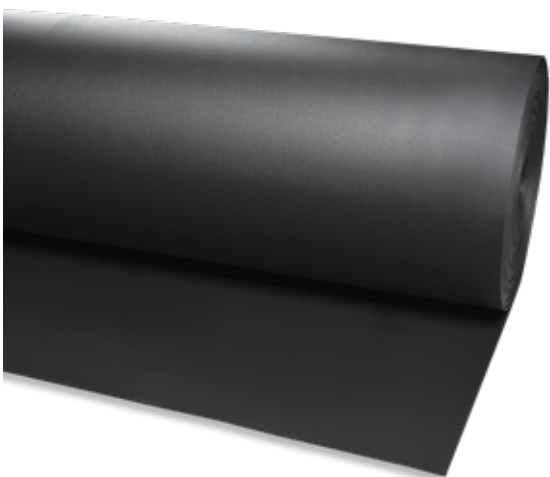
# ISOLMANT SPORT > TECHNICAL SPECIFICATIONS | 1

			VALUE	ADDITIONAL INFORMATION	STANDARD
Acoustic		NOMINAL THICKNESS:	6 mm		EN 823
		REFLECTED WALKING SOUND (RWS):	> 22 Sone	Superior performance	EN 16205
		IMPACT SOUND INSULATION (IS):	$\Delta L_w = 22 \text{ dB}^{(1)}$	EPLF MMFA: superior performance	ISO 10140-3
Mechanic		COMPRESSIVE STRENGTH (CS):	85 kPa (0,6 mm deformation) 120 kPa (1,5 mm deformation) 185 kPa (3,0 mm deformation)	CS2	ISO 844
		COMPRESSIVE CREEP (CC)	> 55 kPa (max. load def. < 0.5 mm in 10 years)	CC1 class EPLF: superior performance	EN 1606
		DYNAMIC LOAD (DL):	> 100.000 cycles (at 25 kPa)	DL2 class EPLF: superior performance	EN 13793
		IMPACT RESISTANCE - LARGE BALL TEST (RLB):	0.5 h after discharge, 23°C: 8% 24 h after discharge, 23°C: 3% after a 22h load and 25% deformation		ISO 1856-C
		CONFORMABILITY (PC):	> 4 mm	PC3	EN ISO 868
Thermo hygrometric		THERMAL RESISTANC (RT):	$R_t = 0,14 \text{ m}^2\text{K/W}$	High thermal resistance	ISO 2581
		WATER VAPOUR RESISTANCE (SD):	$S_d = 40 \text{ m}^{(2)}$	method A @23°C from 0% to 50% relative humidity	EN 12086
		REACTION TO FIRE CLASS:	E s2 - d2		EN 13501-1
		EMISSION OF VOLATILE ORGANIC COMPOUNDS:	VOC A+		ISO 16000-9

	CE MARKING:	Harmonised standards for CE marking are NOT currently available for acoustic insulation products. This means that Isolmant products are currently NOT subject to CE marking, nor to the drawing up of a PDO (declaration of performance) or DDP (declaration of performance). All Isolmant products are placed on the market in compliance with the regulations in force in the country of destination and with the necessary certifications to guarantee their use in dedicated applications.
	SIZE:	Rolls of: 1,5 m x 25 m equal to 37,5 m <sup>2</sup>
	PACKAGE:	1 roll (37,5 m <sup>2</sup> )

ITEM SPECIFICATIONS

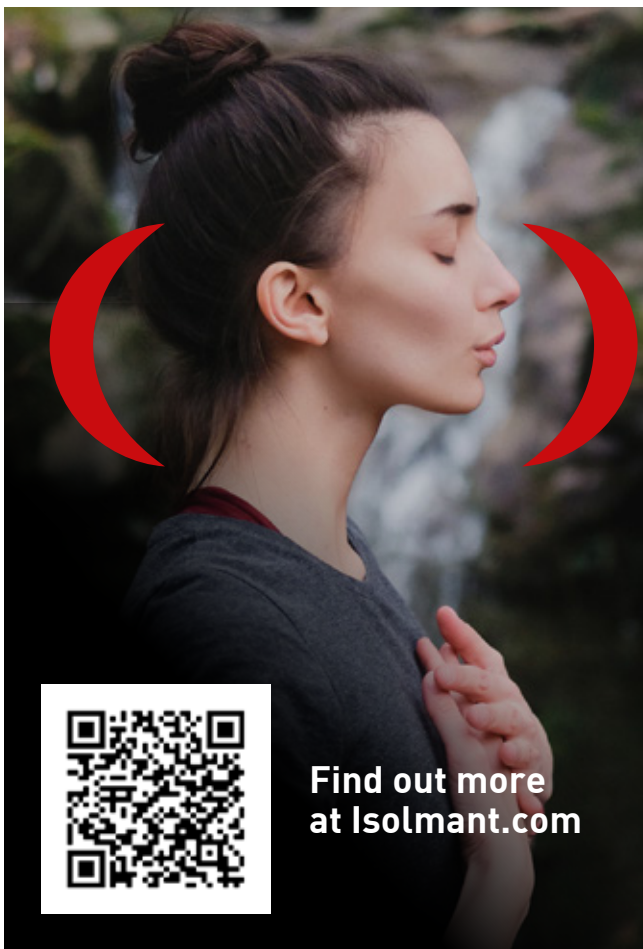
The resilient layer is made of second-generation reticulated expanded closed-cell polyethylene. This product ensures an even performance and high compressive strength over the time (Isolmant Sport type). Nominal Thickness 6 mm, density 70 kg/ m<sup>3</sup>. 10% compressive deformation with 85 kPa. 3% residual deflection after 24 h (after 22 h loading at 25% deflection).




## GREEN FEATURES OF ISOLMANT SPORT

- **Volatile Organic Compounds free** (VOC A+).
- Manufactured with **low environmental impact**.
- **It contributes to achieve credits for the environmental certification of a building according to LEED or ITACA standards.**
- This product can be disposed of according to **EWC n. 170604**.


This product complies with the requirements defined by CAM Edilizia for acoustic and thermal insulation materials regarding the percentage of recycled material and the absence of hazardous substances.




**Green Planet is our sustainable development protocol that includes all our commitments to increase process, environmental, social and corporate responsibility. A set of sustainable actions, goals and behaviors in agreement with our mission, our ethical choices and the Sustainable Development Goals from 2030 Agenda.**




**PRODUCT AND PRODUCTION  
PROCESS SUSTAINABILITY**




**ENVIRONMENTAL  
SUSTAINABILITY**



**CORPORATE  
RESPONSIBILITY**



**SOCIAL  
RESPONSIBILITY**



**Find out more  
at [Isolmant.com](https://www.isolmant.com)**

### ADVANTAGES



Superior impact sound reduction with enhanced footfall noise isolation properties.



Unalterable over time with unlimited durability.



Provides optimized elastic deformation and energy return properties for sports flooring applications.



Contact with water does not affect its performance and characteristics.



Engineered for high-load applications requiring superior compressive strength.

### APPLICATION ADVANTAGES



Easy to install.



Easily cut with a utility knife or cutter, without generating dust.



Large-dimension rolls designed for extensive coverage areas such as sports facility installations.





### WARNINGS:

\* This data sheet does not constitute a specification and, if it consists of several pages, please ensure that you have consulted the complete document. Although, these instructions are the result of our best expertise they are indicative. The user should establish whether the product is suitable for its intended application. The user will be also in charge of all the responsibility for the use of the product itself.

\*\*The sound insulation values given in this technical data sheet are the result of laboratory tests or tests carried out on site: they cannot be considered a predictive value for every situation that may occur on site. Acoustic performance is closely linked to the specific conditions of each site.

\*\*\* Caution: do not expose the product to direct sunlight and bad weather.



Via dell'Industria 12, Località Francolino | 20074 Carpiano (MI)  
Tel. +39 02 9885701 | Fax +39 02 9885702 | [clienti@isolmant.it](mailto:clienti@isolmant.it)  
[isolmant.it](http://isolmant.it) | [sistemapavimento.it](http://sistemapavimento.it) | [isolmant4you.it](http://isolmant4you.it)

Isolmant is a TECNASFALTI srl's registered trademark - © TECNASFALTI - All rights reserved - Copying, even partially, is forbidden - In force since May 2025 - This document supersedes and replaces all previous versions.

